



CORPORATE OVERVIEW

THE LEADING FORCE IN BUILDING, COMMUNICATIONS & ELECTRICAL

TEC Services Group Pty Ltd established in 2002 is a privately owned company based in the Pilbara.

Since inception the company has seen steady growth over the years as we have expanded our capabilities to include building, plumbing, electrical, communication, Air-Conditioning, civil and construction. This expansion and diversification means we offer our clients in the Pilbara, Perth and South West regions of Western Australia one point of contact to deliver a complete turnkey trade services solution.

With our commitment to constant improvement we will continue to grow our service offering and expand in to new regions to better service our valued clients, and their preferred contractors, in the mining, oil and gas sector.



LEADING THE WAY

With sustained and healthy company growth, even during times of financial uncertainty, TECS remains focused on setting the standard within the industry.

We value relationships highly, not only with our clients but also our supporting services. We align ourselves with like-minded businesses who will help us deliver on our vision and produce the highest quality results on time and on budget.

We are focused on long term strategic planning and have created a customer centric company culture that empowers our team to do their best work every time, on time.

This high performance culture of accountability and responsibility allows us to guarantee the quality and consistency of our work. We are committed to finding the best solution for our clients.

We invest heavily in technology, research and development to ensure our team always have best in class systems to increase efficiencies and reduce time frames.

We work tirelessly to ensure we are an employer of choice, creating a working environment that increases staff retention, reduces turnover and attracts the best people in the industry.





COMMITTED TO EXCELLENCE



GREAT RELATIONSHIPS START WITH GOOD COMMUNICATION

TECS is committed to looking after you for the life of your project and beyond. We know that long term client relationships have been the key to our success and can guarantee we will always deliver the following:

- **Accountable** – We will always honour our word;
- **Available** – We will ensure we always have the resources and capacity to meet your requirements on time;
- **Quality** – We will deliver a high standard of work that meets your expectations, every time;
- **Transparent** – We will be honest and authentic with you and will communicate clearly on all project matters;
- **Safe** – We will meet our internal and client safe working standards and will have a zero tolerance policy on unsafe work practices.

Prior to the commencement of any project, TECS will work closely with you to establish your service requirements, set expectations, benchmarks and key project milestones.

We pride ourselves on maintaining open, honest and consistent communication with our clients at all times.

Our commitment to best practice systems and processes means you are kept up to date every step of the way. If you have a query, we will respond within 24 hours. We will communicate regularly with progress updates and project reports at all major milestones to ensure your experience with us is a positive one.





LEADERSHIP TEAM

At the heart of any great organisation is great people. We are proud of our family heritage and carry these traditions of a 'can do' attitude throughout the company as we continue to grow.

TECS ability to implement and resource our projects effectively is testimony to the success of our company.

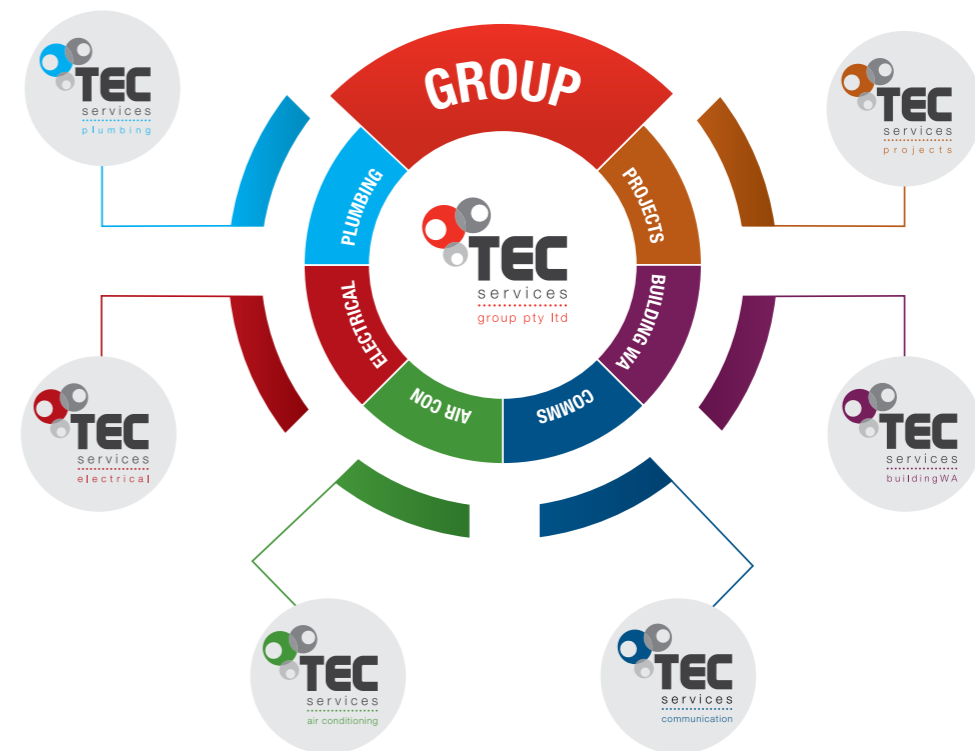
Our senior management team have a wealth of experience and can be contacted at any time to discuss your new or existing project requirements.

- Darren Boulton** – Managing Director
- Joel Ide** – Town Manager
- Tony Ide** – Building Manager
- Melissa Murphy** – Administration Manager
- Matthew Templeman** – Estimator
- Nathan Macaulay** – Project Manager
- Jason McKeon** - Mining Superintendent
- Jesse Barron** – Town Superintendent
- Joshua Pickup** – Plumbing Manager
Licence Number PL9127



OUR SERVICES

TECS is one of regional WA's most experienced and trusted Building, Plumbing, Electrical and Communications Contractors. Our company spans 6 key business divisions which are summarised below:



CORE COMPETENCIES AND CAPABILITIES



As licenced builders and electrical contractors we offer a wide range of services with our diverse team able to deliver technical excellence, experience and expertise to all projects we undertake.

We have a proven track record of successful projects utilising our key personnel, systems and processes and extensive range of mine-site ready plant and equipment.

With the growth, expansion and diversification of the company we have found self-performing disciplines such as excavation/civil works, concrete and pre-cast panels allows us to reduce cost and deliver a turnkey service that provide our clients with a single point of contact.

Electrical

Operating under Licence Number EC000333, we provide industrial and commercial electrical contracting which includes:

- Power generation
- Instrumentation
- Process Control Systems
- Lighting
- Single phase power
- Three phase power
- Lighting poles
- Lighting control
- Air conditioning – split systems
- Fire systems
- All cabling – LV, HV, fibre optic, copper, security, fire cable
- Maintenance (to all of the above)
- Instrumentation, control, commissioning
- EEHA installations, maintenance & inspections
- Test and commissioning - LV, HV, fibre, copper, security, fire cable
- Underground and above ground cabling
- HV underground cabling and Maintenance Inspections
- LV cabling to domestic, commercial and industrial building

Project Management

We offer a full project management solution for our clients and provide engineering, design and construction and consultancy services, including:

- Engineering of civil and concrete works
- Design and construction of electrical installation to all aspect of construction – commercial and industrial
- Consultancy for all works to building, electrical, communications, fibre networks, fire systems and security access control

Communication

TECS are an active part of NECA, the national electrical and communications association and pride ourselves on delivering the best in communication systems for our clients. Our services in this area include:

- CCTV systems
- Security systems
- Access control systems
- MATV systems
- Communications – data, telephone, radio
- Structured cabling - including fibre optic, Cat 6 and RF radio and microwave links
- Wireless networking
- Vehicle / Asset tracking 3G / Satellite

Air Conditioning

Operating under Licence Number AU34444 we can handle all of your air conditioning requirements, including:

- HVAC
- Hydro cleaning
- Split System Air Conditioners
- Installation
- Servicing
- Routine Maintenance / Asset Management

Plumbing

We aim to be the #1 choice for plumbing and gas in the Pilbara, with an exceptional reputation for client satisfaction and quality workmanship.

We specialise in a range of areas including;

- Mining
- Large scale projects
- Domestic and commercial plumbing
- Remote plumbing

- New homes and renovations
- Maintenance and repair work
- Emergency plumbing
- Backflow testing and prevention
- Gas fitting
- Water filtration systems
- Sewage treatment
- Compliance auditing

Building / Civil

Operating under Licence Number 101564, we provide the following building related services:

- Design and engineering
- Drafting
- Construction
- Steel structures
- Concreting - footings, suspended slabs, ground floor slabs
- Commercial
- Cladding and roofing
- Fencing – all types
- Building maintenance
- Office refurbishment / office fitouts
- Building maintenance
- Bathroom install / upgrades
- Toilet upgrades

As part of our turnkey offering, we own and operate plant and equipment to do all ranges of trenching, excavation and concreting as well as auguring of lighting poles.

Our range of plant and equipment includes:

- 16 ton truck and Hiab's
- Excavators
- Tip truck
- Electrical test equipment
- Communication test equipment
- Mine spec vehicles

As part of our full service civil works solution, we can also deliver:

- Concreting - footings, suspended slabs, ground floor slabs
- Steel structures
- Renovations and additions
- New housing
- Gyprock and plastering
- Wall and floor tiling
- Cladding and roofing
- All types of fencing



THE TECS WAY

TECS defines its perpetual mission and vision based on a system of continual improvement, benchmarking and strategic planning.

Within this framework we are constantly seeking feedback from our clients and developing new systems, processes and strategies to improve our operations.

We are committed to our values and high performance culture of accountability and responsibility to deliver quality outcomes, keep our promises and deliver projects on time to a standard that meets, or exceeds, our client expectations.

We encourage feedback from all stakeholders, evidenced by the fact that we monitor and measure client loyalty regularly.

We also ensure our strategic plan is communicated and understood by our entire team, and that they are fully engaged in helping us achieve our short and long term goals.



CORE VALUES

Winning Aspiration

The leading force in Building and Electrical in the Pilbara and WA

Services Values

Timely - We are available to get it done on time

Effective - We go above and beyond for our clients

Committed - We are committed to delivering quality to our customers

Safe - Zero Compromise Towards Safety meeting our internal and our clients safe working standards

Available - We are ready to mobilise with the right skill sets





OCCUPATIONAL HEALTH SAFETY ENVIRONMENT STATEMENT

We have a zero tolerance to not meeting our internal and our client's safe working standards.

TECS are committed to providing safe and healthy work environments throughout our organisation by the implementation of our occupational health, safety and environmental management system,

aligned with the requirements of AS/NZS 3000-2000, or AS/NZS 3000-2007, AS-4801, 'WA Electricity Requirements', Electricity (licensing) Regulations 1991, Electricity Regulations 1947, ISO-14001, and applicable statutory regulations, standards and codes of practice, in line HSEQ specifications to achieve our objective of zero harm to employees and Contractors.



PROJECTS





Mulla Mulla

BHP expansion project to the existing 502 room Mulla Mulla Village with an additional 2502 accommodation rooms together with Central Facilities modifications.

The scope included all electrical and communications works within the Mulla Mulla site including the Eastern Accommodation Block, Central Facilities, Waste Water Treatment Plant and Western Accommodation Block.

- Modifications and additions to 33kV High Voltage reticulation, including installation and commissioning of 6 x Kiosk Substations and Generators.
- Supply and install new 415V power cables from all 7 standby generators to Kiosk Substations, all 415V power cables from PDPs (Kiosk Substations) to field distribution boards, supply and install new field distribution boards for accommodation power supplies.
- Supply and changeover of accommodation distribution boards to BHP specification.
- Supply and install all underground HD conduits, communications conduits and pits.
- Supply and install all building lighting, area lighting, sports field lighting and small power including upgrade and modification of existing lighting.
- Supply, install test, tune and commission IRCES system for all the accommodation rooms and central facilities, including ONT, MATV & Wireless Access Points (Wi-Fi APs) in accommodation rooms and central facilities to provide wireless internet services to the residents.
- Supply and install all fibre optic cables including modifications to existing fibre network, including install Cat6A cabling between network ports and communications cabinet including patch panel termination.
- Supply and install evacuation siren radio communications.
- Supply and install site CCTV, Cardax security system.
- Supply, install and commission fire detection and monitoring systems.

Project Cost \$20M
Manning 40
Jan 2018 - June 2019



FMG Tugage Services – Tug Facility

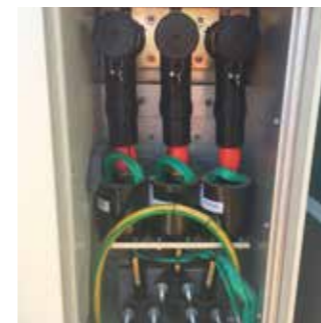
FMG Tug Facility Anderson Point Port Hedland

FMG Tugage services will service FMG Iron Ore and will also provide an ancillary service for PPA Port Hedland. The facility will hold 10 tugs with possible expansion capabilities to 14.

The Onshore component comprises of 2 Warehouses, Workshop and wash down facility, Administration, Crib/ Meeting room, Ablutions and Offshore Diesel Dispensing, Black water Recovery, Oily Water Recovery and Potable Water.

Infrastructure included a 22KV installation, RMU and 2 x Transformers. Extensive Fibre optic network for Banlaw control, CCTV and Security capabilities.

Project Stats Value: \$2.8m
Duration: 6 months
No of Employees: 20 persons



BHP Port Hedland Warehouse Hub

Environmentally Friendly Designed Warehouse & Control Room.

Design, Supply, Installation & Commission of Electrical & Communication Services into the Macedon Onslow Gas & Warehouse & Control Room inclusive of C-Bus Control System (Smart Wiring) for energy saving lighting.

Project Stats: Value: \$2.1m



Gateway WA Project (Leighton's, Georgiou and MRD JV)

Port Hedland International Airport Upgrade

Designs and Construct. Research all required electrical infrastructure for the future 20 year infrastructure plan at the PHIA. Installation of 22kV reticulation to ensure all future power demands meet Airport requirements including:

- 3000A Site Main Switchroom integrated with automatic changeover and monitoring of 2 x 750KVA essential Power Gensets and Diesel fuel storage.
- High Voltage metering and distribution substations.
- Upgrade of Area Distribution Boards, low voltage site distribution of essential and non-essential loads
- Self-perform- Management, HSE, civil, tilt panel construction of fire rated switchroom, excavation and earthworks.
- Ongoing maintenance of HV / LV infrastructure.

Value: \$5m



Over 2000 Permanent Street Lighting & Associated Components Installation (Bulk material supplied by Client)

Install 2000 permanent street lights & remove existing temporary street lighting on a schedule of rates basis as and when required by Gateway WA (GWA). The scope of works included all civil works associated with street light installation including but not limited to trenching, conduit install & augering.

Supply all labour, materials (except as noted in the Works Excluded), supervision, loading, transportation, consumables, plant, equipment, tools & any other items necessary to complete the works in accordance with the Contract requirements.

**Project Stats: Value: \$5m
Duration: 48 months
No. of Employees: 15**



Roy Hill Project – Rail Non Process Infrastructure Buildings and Associated Site Services

Supply and installation of Electrical and Communication Services including but not be limited to the complete design, supply, fabrication, testing, delivery, unloading, erection, instrumentation, controls works associated with the Rail Non Process Infrastructure Buildings and Associated Site Services.

- Rail Terminal Site services infrastructure
- Rail Terminal Rolling Stock Workshop
- Rail Terminal Administration Building
- Rail Terminal Wheel Lathe Building
- Rail Terminal Warehouse
- Rail Terminal Washdown Facility

Project Stats

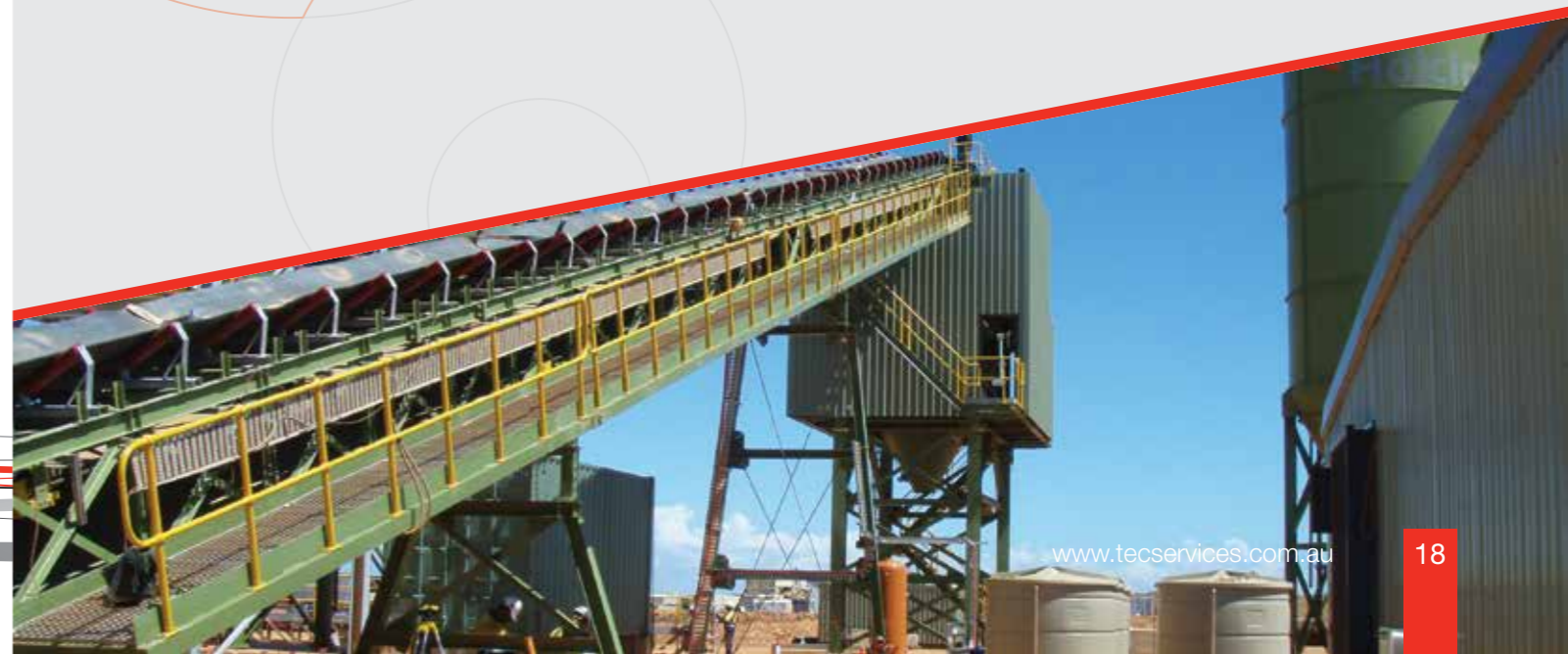
Value: \$4.1m

Duration: 12 months

No of Employees: 20 persons



ELECTRICAL PROJECTS



UGL NCS HEH POL Refurbishment Project

Naval Communication Station Harold E. Holt

The Scope of Work completed in Stage one was the following: a major overhaul of the existing infrastructure controlling the refuelling from the pier to the sites bulk fuel facility. Then to transfer to the ready fuel facility at the power station feeding the diesel generators at the power station. Stage two to be completed includes the changeover facilitating the use of PLC and instrumentation to control transferring diesel.

Duration: 3 Months
Stage One Cost: \$475,000
No of Employees: 5 Persons



Roebourne Shire Karratha Airport LV and HV Infrastructure Upgrade

Great Northern Highway Re-alignment

Supply and installation of 400 Street Light poles

Supply and installation of all necessary materials, consumables, labour, plant (including EWP or scaffolding as appropriate), tools & equipment to supply, install, test and commission the Street Lighting in accordance with this Scope of Work Statement, Specifications and Drawings at the following locations BHP Access / Old GNH, Utah Road, Pinga Street, Interchange including Ramps, shared Path and Wall Work as indicated on the Drawings New street lighting comprised of high pressure sodium (HPS) luminaries in accordance with Horizon Power specifications.

Project Stats:
Value: \$3.2m
Duration: 7 months
No. of employees: 16



Upgrade of the Karratha Airport Electrical Distribution (High and Low Voltage Power) System.

The upgrade included the phased replacement of the existing 11kV systems with 33kV systems to remove current and future capacity constraints at the airport and replace old equipment that is at the end of its design life.

The work also included the replacement of old and degraded 415V distribution cabling.

Project Stats: Value: \$7.3m



FMG T155 - Solomon Mine Kangi Village 8MW Power Stations Installation



BHPB - Port Haven 1200 Person Village

Supply and Installation of Kangi & Daily Village Power Stations.

- 6 x 1250kVA, 400V Cummins powered packaged
- 2 x 400kVA, 0.400/33kV step up transformer; diesel generating sets
- 1 x fully fitted out prefabricated transportable switchroom building

Project Stats: Value: \$5m



Design and construction. Dry and wet Mess, utilities and administration facilities. Supply and installation of all HV ring main system, LV distribution systems. Supply and installation of SMSB and sub-distribution boards. Installation of underground services including power, street lighting and communication systems achieved for the entire electrical works.

Project Stats: Value: \$11m



Gorgon Lng Plant Barrow Island

- Liaison with the Client (Holcim) Site Project Manager with regard to collection, transport and on site location and set out for all equipment to be supplied, installed and commissioned under the Electrical Services Construction Sub Contract irrespective if it is free issue or to be supplied as part of the Electrical Services Sub Contract.
- Acceptance, installation, termination and testing to check lists and schedules of all Client issued switchboards.
- Supply, installation, termination and testing of mains cabling between each diesel generator and generator main switchboard.
- Supply, installation, termination and testing of sub mains cabling from each main switchboard to each destination nominated on the single line diagrams and cable schedules.



BUILDING PROJECTS





Pundulmurra Campus South Hedland

Pundulmurra Campus South Hedland Landscaping and shade structure.

Supply and installation of landscaping, decorative shade structure, basketball area, concrete pathways and kerbing.

This work involved all earthworks, electrical and manufacture of required structures.

Landscaping works involved the supply and installation of plant, lawn and reticulation system.

Project Stats
Value: \$844,000
Duration: 12 weeks
No of Employees: 10



BHP Warehouse Fire Ladders

BHP central warehouse fire ladders & platform for fire water tanks

Supply & Installation of access ladders and landing platform to fire water tanks at BHP Central Warehouse facility. Carnage and Elevated work platforms were used in the installation process.

Project Stats
Value: \$87,000
Duration: 2 weeks
No of Employees: 4



Fortescue Metals Group

Water Blasting & Painting of 20 Gantry Cranes at FMG Thomas Yard Port Hedland

Blasting and painting of 20 Gantry Cranes at FMG Thomas Yard Port Hedland.

The gantry cranes have been wet abrasive blasted using a Torbos wet blaster to reduce the amount of waste and environmental impact and then a coat of Dulux Zinc Anode 402 primer and 2 coats of Dulux metal shield premium UV resistant enamel top coat.

2x 45ft boom lifts were used during the project

These works will prolong the life expectancy of the cranes to ensure rail line works will continue at the required rate

Project Stats Value: \$260,000
Duration: 9 Weeks
No of Employees: 7





Courthouse Gallery Toilet Upgrades

Upgrade Male & Female toilets

The works required the removal of all existing fittings and fixtures and replacing them with all new fittings & fixtures including:

- Plumbing
- Electrical
- Floor coverings - Tiles
- Glazing – Mirror install
- Cabinetry – New partitioning
- Painting

Project Stats Value: \$61,000

Duration: 3Weeks

No of Employees: 9



COMMUNICATION PROJECTS





Mulla Mulla 2500 Village Construction and Facilities



Port Hedland Port Authority Access Control System

Main Scope Summarised

Supply and installation all communications equipment for a 2500 person village to all Central Services and Accommodation buildings including:

- Communications cabinet,
- GPON Fibre Optic Network, Fobots,
- WAIO In-Room Communication & Entertainment Systems (IRCES)
- UPS, power conditioner, network switch,
- Wifi APs, Optical Network Terminals (ONTs), RF splitters,
- RJ45 patch panels, POE injectors, coax patch panels, patch leads,
- Cardax/Gallagher swipe controllers, card readers, CCTV cameras,
- TVs, projectors, projector screen, audio sound system and all other ancillary items required to complete the Works.
- Underground Communication conduits and all pits as per fibre optic cable route layout Drawings

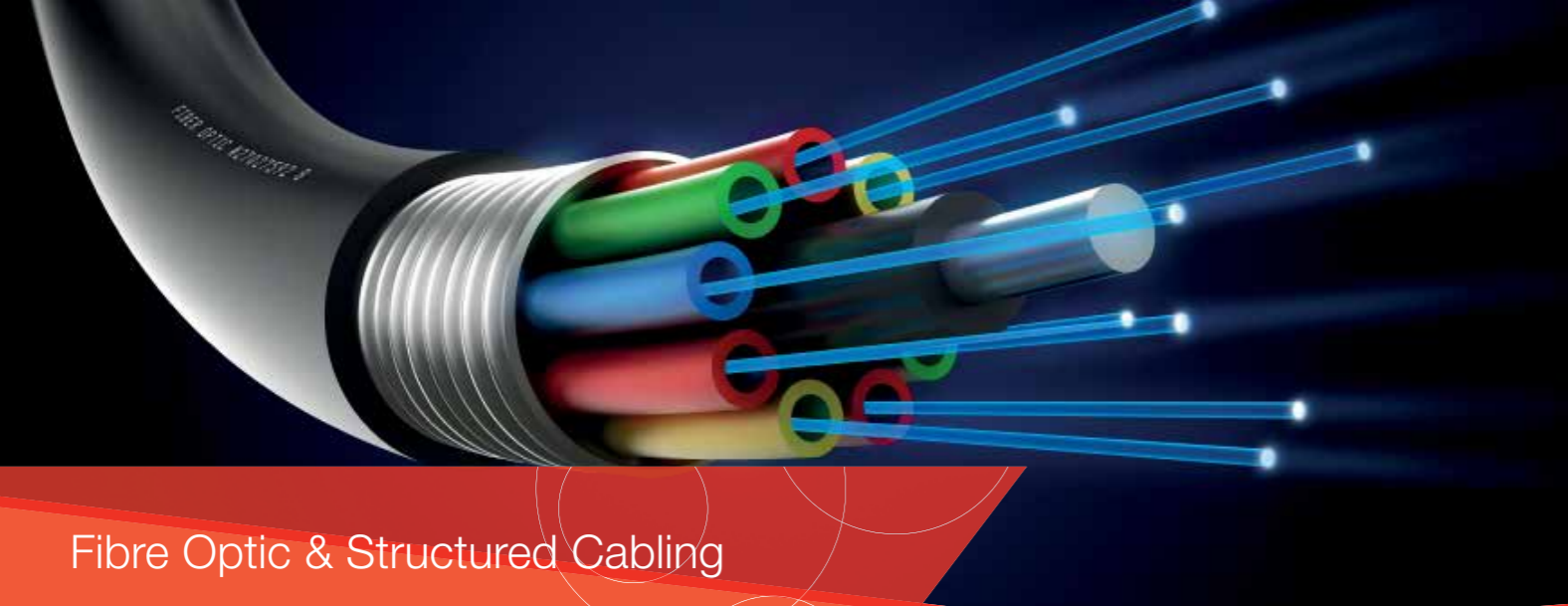


Gallagher Cardex system design, supply and installation for the PHPA to client specifications.

Supply & install swipe card access system to interface with the existing CCTV system. Including:

- 65 access points site wide with swipe card control
- Alarm Management & Intrusion Detection
- Anti Pass Back
- CCTV interface with existing equipment
- Automatic Backup System & Fibre Optic Compatible Interface
- 15 additional CCTV cameras

Project Stats: Value: \$1.1m



Fibre Optic & Structured Cabling

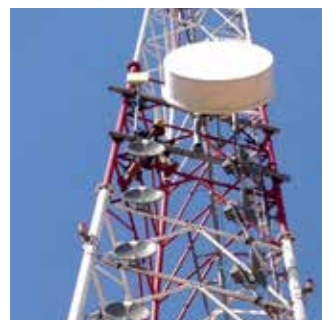
Fibre Optic. Design, Supply, Installation, Testing and Certification

- **Civil Works** - Our operators have over 25yrs experience in all facets of civil works from soft grounds to hard rock.
- **Cable Laying** – With services location equipment and experience with cable laying we can provide you with the best possible solutions.
- **Fibre Splicing** – All splicing equipment is certified for the task. Our aim is to provide the highest quality splicing through sterilization and clean work environments.
 - Single Mode
 - Multimode
- **Test & Certification** – Our trained technicians with current certified test equipment will ensure your equipment is operational to the highest standards. Our test equipment is certified every 12 months by our suppliers to ensure the standards are met.

Structured Cabling / IT Capabilities. From a single data point to a complete network TEC Services can offer you design, sales, installation, maintenance and local service.

TEC Services Supply, Install & Maintain.

- **ACMA certified structured cabling technicians**
 - Our technicians are certified by ACMA, which provides you with the knowledge that all works meet Australian Standards and quality.
- **Krone / Clipsal qualified**
 - All products used meet with the highest standard to provide quality of service.
- **Cat5/5e/6/6a**
 - Internal cabling
 - Aerial
 - Underground
- **Telephone**
 - Domestic & Commercial
 - Single point
 - Telephone systems
- **Data Centre installations**
 - Patch Panels
 - Switches
 - Cabinets
 - Cable trays & infrastructure



CCTV Access Control, Security, Safety

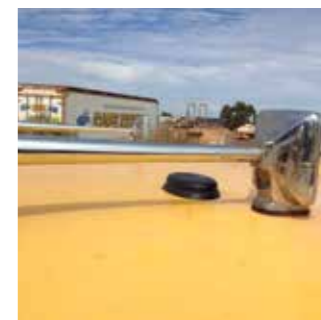
In conjunction with our partners TEC Services can offer a complete package for the safety and security of your premises.

Tracking your fleet for management, maintenance and accountability to your clients

- **Gallagher (Cardax) Access Control systems**
 - Single access
 - Multi access
 - CCTV interface
- **HikVision CCTV IP cameras systems**
 - Residential, Commercial
 - Fixed
 - PTZ
- **Ness Alarm systems**
 - Residential, Business & Commercial security
 - 24Hr monitoring
 - Linked to CCTV
 - Linked to access control

Heavy Vehicle DVR systems (driver safety)

- Multi Camera systems
- HDD recording
- Live streaming
- **Black Box Vehicle tracking systems**
 - 3G/4G vehicle monitoring
 - 3G/4G/Satellite vehicle tracking
 - IAP approved installers and service
 - Live tracking





RF Communications

With a fully equipped workshop and field test equipment, you can be assured we have all your RF communications covered.

Iridium / Inmarsat Satellite

- Fixed Station
- Mobiles
- Handhelds

Communications

- Motorola, Tait, Icom, Simoco, GME
- Sales / Service / Installation
- Base Stations / Networks
- Mobile
- Handheld
- Full workshop and onsite test equipment
- Tower Maintenance and installations

Television – Free to Air, MATV, Foxtel

- Design, supply, Installation & service
- Free to air for domestic and commercial applications
- MATV for commercial applications
- Foxtel from single domestic installs to commercial premises

Microwave / WiFi

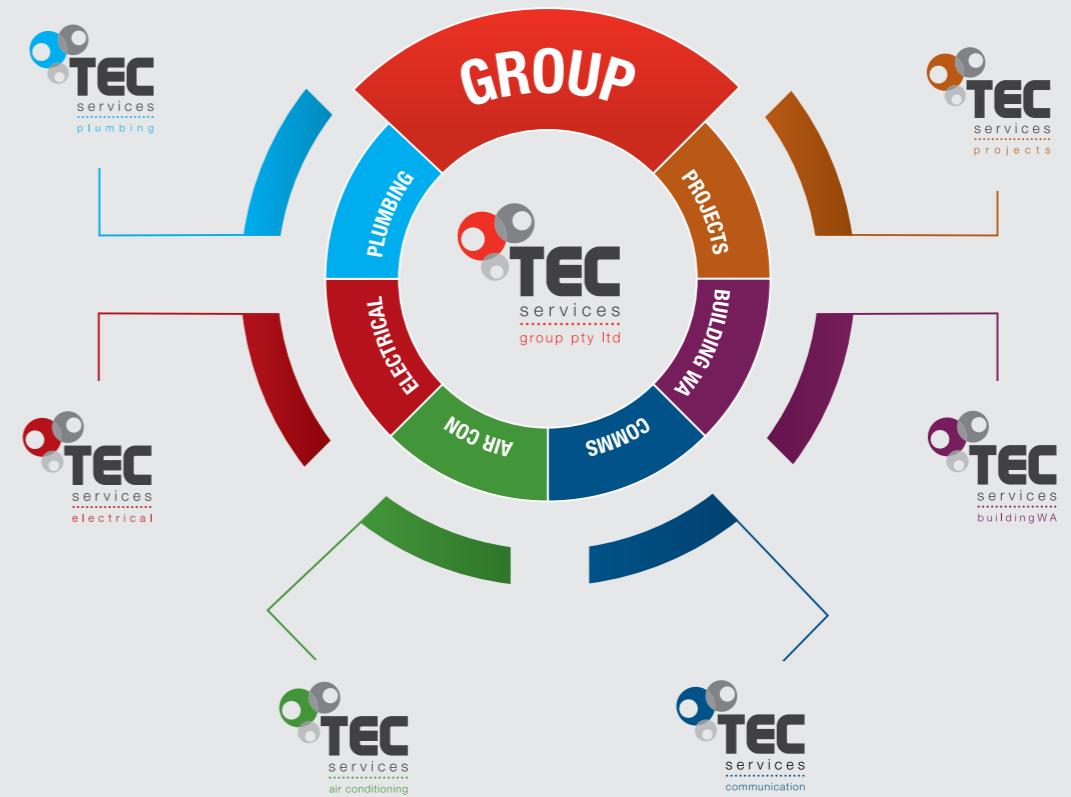
- Backbone Infrastructure
- Point to Point
- Point to Multipoint systems

Maintenance Support Rail

- ATP (Automatic Train Protection) system uploads of latest mapping data.
- Rail Signal technicians on contract for support to BHP Billiton



Supporting Regional WA Since 2002





PO Box 843,
Port Hedland WA 6721
Lot 2 Hardie Street
Port Hedland WA 6721

Electrical Licence Number EC000333
Builders Licence Number 101564
Air Conditioning Licence Number AU34444
Plumbing Licence Number PL9231

☎ 9173 2231
✉ admin@tecservices.com.au
🌐 www.tecservices.com.au

